



ultra-flow



+27 21 5517496



sales@ultra-flow.com



www.ultra-flow.com



LINCOLN QUICKLUB®

SSV DISTRIBUTION BLOCK

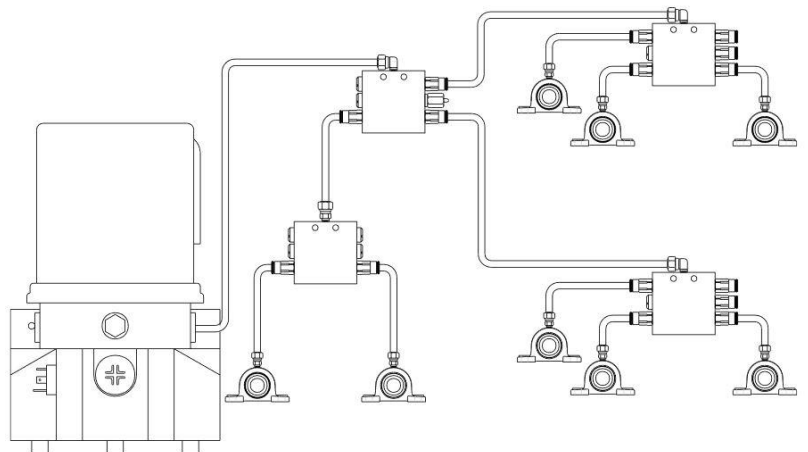


The SSV distribution block may be incorporated into a manual or automated Quicklub system. Featuring from 6 to 22 outlets, the SSV distribution block is available in carbon steel and 303 stainless steel for corrosive environments.

More than a drilled manifold block, the SSV distribution block incorporates a series of metering pistons which accurately dispense lubricant from each outlet, overcoming back pressure of up to 1,000 psi.

CONSTRUCTION MATERIAL	MAX. OPERATING PRESSURE MIN. OPERATING PRESSURE	OUTPUT/CYCLE PER OUTLET CU. IN. / CC	LUBRICANT INLET	LUBRICANT OUTLET	OPERATING TEMP.
Carbon Steel	5076 psi / 350 bar 290 psi / 20 bar	.012 / .2	1/8" NPTF(F)	M10x1	-22°F (-30°C) to 212°F (100°C)
Stainless Steel			1/8" BSPP(F)		

AVAILABLE MODELS (CARBON STEEL)	
MODEL NUMBER	MAX. NUMBER OF OUTLETS
UF-SSV6	6
UF-SSV8	8
UF-SSV10	10
UF-SSV12	12



LINCOLN QUICKLUB®

SSVD DISTRIBUTION BLOCK



The SSVD distribution block is fully adjustable per outlet pair, ensuring more precise lubrication per point and meeting lubricant requirements at a more effective rate. This is achieved through the use of metering screws, which allows for the easy setup of outputs per point.

The SSVD distribution block can be integrated into any existing Quicklub lubrication system and can operate in connection with the SSV distribution blocks.

CONSTRUCTION MATERIAL	MAX. OPERATING PRESSURE MIN. OPERATING PRESSURE	OUTPUT/CYCLE PER OUTLET CU. IN. / CC	LUBRICANT INLET	LUBRICANT OUTLET	OPERATING TEMP.
Carbon Steel	5076 psi / 350 bar	Min. .0049/.08 / Max. .110/1	1/8" NPTF(F)	M10x1	-13°F to 158°F (-25°C to 70°C)




AVAILABLE MODELS (CARBON STEEL)		
MODEL NUMBER	MAX. NUMBER OF OUTLETS	NUMBER OF REQUIRED METERING SCREWS
UF-SSVD6	6	3
UF-SSVD8	8	4
UF-SSVD10	10	5
UF-SSVD12	12	6

METERING ADJUSTMENT SCREWS	
MODEL NUMBER	OUTPUT CU. IN. / CC
UF-MS008	.0049 / 0.08
UF-MS014	.0085 / 0.14
UF-MS020	.012 / 0.2
UF-MS030	.018 / 0.3
UF-MS040	.024 / 0.4

METERING ADJUSTMENT SCREWS	
MODEL NUMBER	OUTPUT CU. IN. / CC
UF-MS060	.037 / 0.6
UF-MS080	.049 / 0.8
UF-MS100	.061 / 1.0
UF-MS140	.085 / 1.4
UF-MS180	.110 / 1.8

LINCOLN QUICKLUB®

PUMP ACCESSORIES

AVAILABLE MODELS		
MODEL NUMBER	DESCRIPTION	ILLUSTRATION
UF-K7	7mm Pump Element Lubricant Output: .244 in ³ /min / 4 cm ³ /min	
UF-SV350	Safety (Relief) Valve 350 Bar Rated	
UF-SF1	Grease Filter G ¼ Thread SF1 additional protection for contaminated areas	
UF-PROXY	Proximity Switch Lubricant flow confirmation	

